



The Chenonceau
4608 Owl Creek Lane
Homesite 6 Jacob's Ridge

This beautiful French chateausque home features many design elements characteristic of the famed Biltmore House in Asheville, NC. With its authentic French styling, this stone and hardcoat stucco home resembles elegant chateaus of old gracing the French countryside. And in the interior, elegant living spaces are carefully designed to create spacious vistas in every direction – a feature inspired by classic, timeless architecture. Build this home, customize it, or create a home of your own vision on this magnificent homesite!

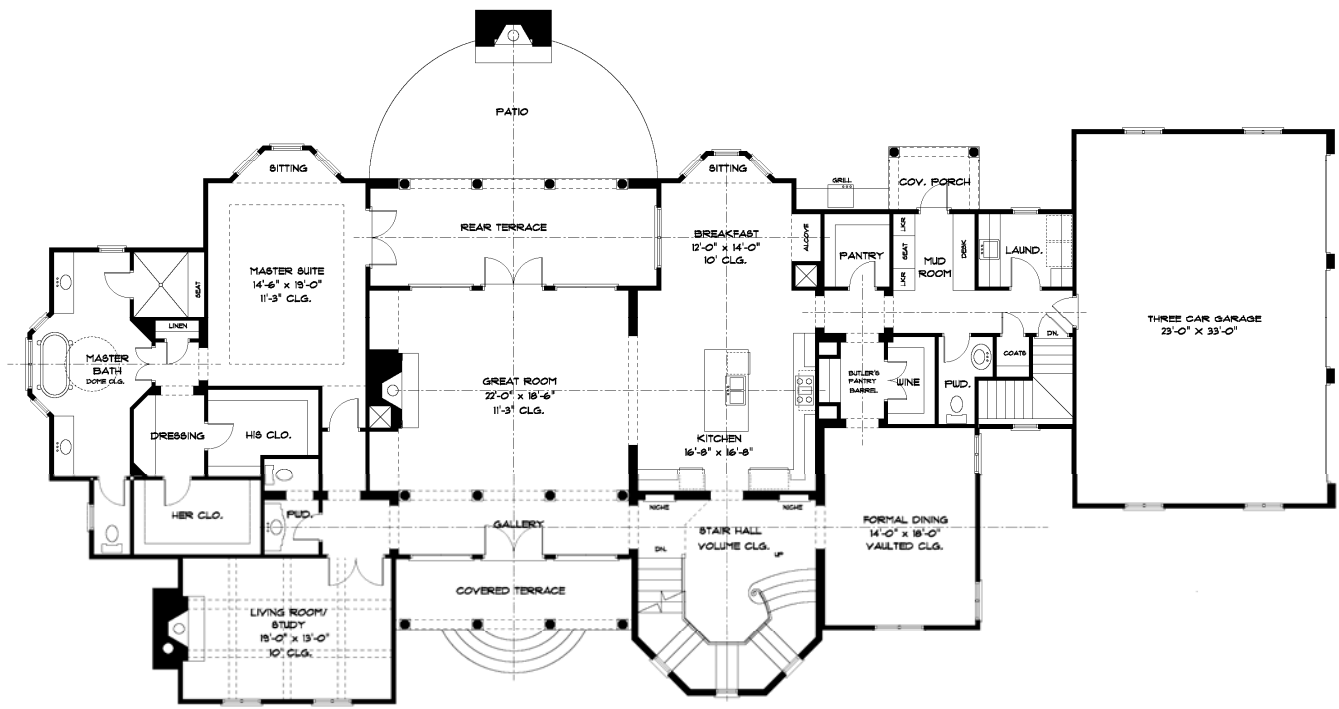
- 4 Bedrooms, 4 full baths, and 2 half baths
- 5205 heated square feet
- Unfinished basement for optional living space
- Main level owner's suite with bay sitting area
- 3 Car garage easily expandable for 4 cars
- Outdoor living space with huge area for pool
- 2.3 acre estate lot with exceptional privacy
- Heavily wooded with 200 year old hardwood forest
- Outstanding curb appeal and great view from the ridge
- Protection by very low density watershed regulations
- Proximity to the NC Research Campus and Carolinas Medical Center - Northeast



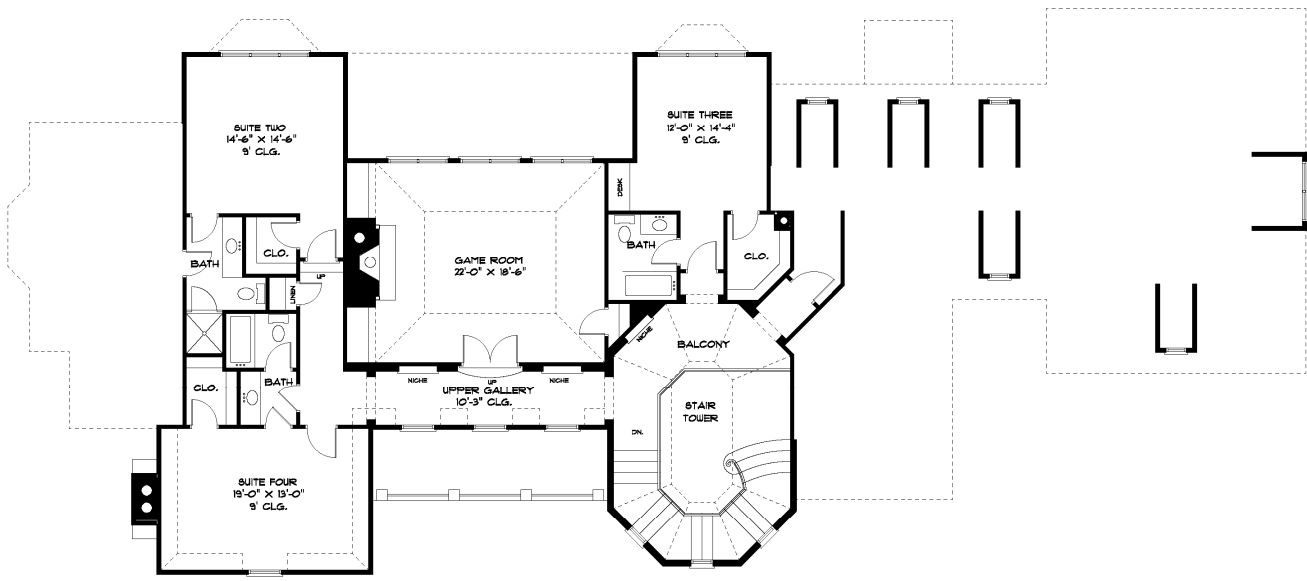
Goodwin Classic Homes, Inc.
P. O. Box 77165, Charlotte, NC 28271
www.goodwinclassichomes.com
Telephone 704-506-7950



as of 09/07



FIRST FLOOR PLAN



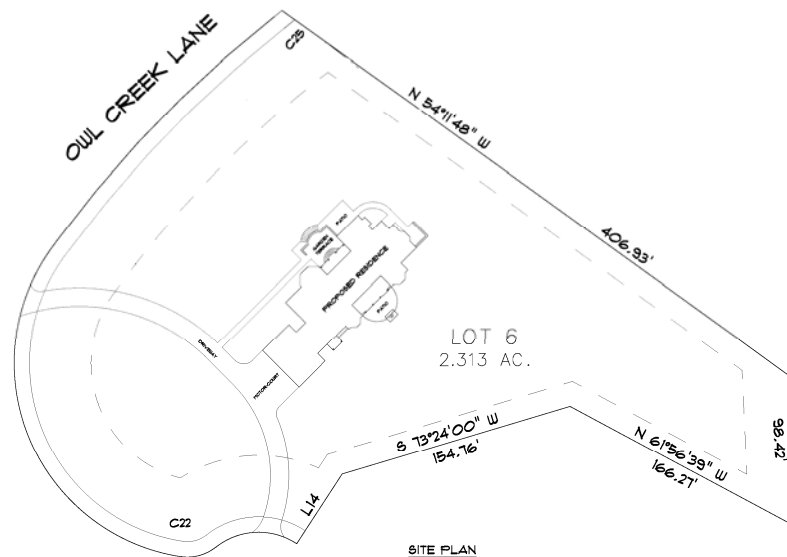
SECOND FLOOR PLAN

Exterior Design Elements:

The cathedral-cut limestone foundation and terrace walls; the time-honored hardcoat stucco with classic quoining; the copper oriel window at the left elevation; the steeply pitched roof with flared roof eaves; the classic turret with staggered windows and corbeling; the arched front portico with stone columns, balustrade, and mahogany entry doors; the arched roof dormers; and much more!

Interior Design Elements:

The beautifully appointed kitchen that flows openly to the breakfast room and the great room; the luxurious main level master suite with bay window sitting area and large her and his closets; the master bath with oriel window and domed ceiling; the stair tower with dramatic vaulted ceiling and winding staircase; the generous library/music room with its coffered ceiling and stone fireplace; the spacious dining room with adjoining wine cellar and butler's pantry; the great room with 11 1/4' ceiling and stone fireplace; the huge upstairs entertainment room with fireplace and vaulted ceiling; and much more!



SITE PLAN